

# Thomson – East Coast Line 4

OPENS 23 JUNE 2024

Tanjong  
Rhu

Katong  
Park

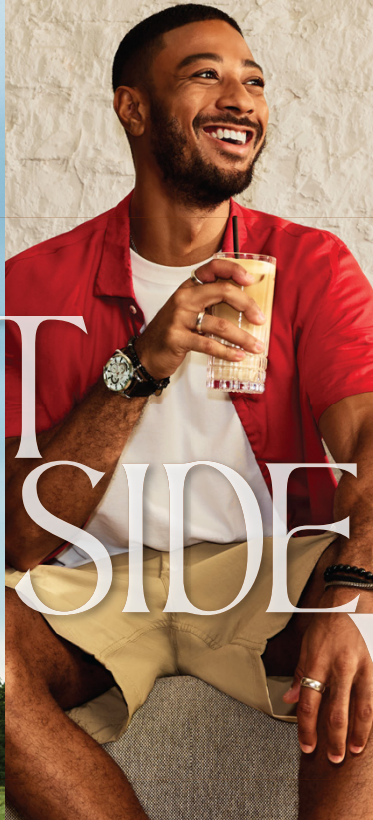
Tanjong  
Katong

Marine  
Parade

Marine  
Terrace

Siglap

Bayshore



Enjoy the  
**EAST  
SIDE  
VIBE**

Come experience the food, fun, and outdoors of the East Coast!

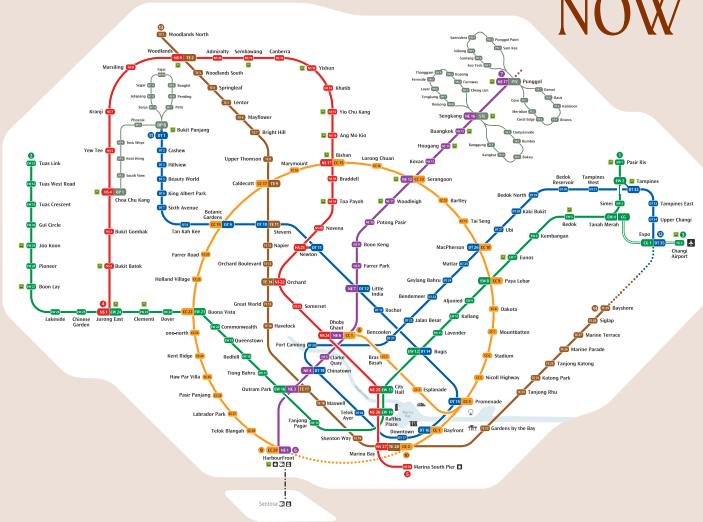
INTRODUCING

# 7 NEW STATIONS



It's now easier to enjoy the vibes of the East side with the newly-opened Thomson-East Coast Line Stage 4 (TEL4). Whether you love lazy afternoons at East Coast Park, or sipping on a cold brew in Katong – relax and let TEL4 take you there.

## GOING TO THE EAST IS NOW A BREEZE



When TEL4 opens, around 235,000 households will be within a 10-minute walk from an existing TEL station. Enjoy the convenience of TEL4 and save up to 50% of travel time!

So why not go green by reducing your carbon footprint and take a ride on public transport?



Tanjong Rhu Suspension Bridge

TE23

TANJONG RHU



TE24  
KATONG PARK



TE25  
TANJONG KATONG

TE27

MARINE TERRACE



TE26

MARINE PARADE



TE28

SIGLAP



Photo from [www.nparks.gov.sg](http://www.nparks.gov.sg)

TE29

BAYSHORE



Photo from [www.nparks.gov.sg](http://www.nparks.gov.sg)

# PUBLIC PREVIEW

21 JUNE 2024

**Free travel along 7 new TEL stations!**

## Fun activities await!

Join us for a **Journey through the Colours of the East** to explore the new stations!

Grab your friends, family or colleagues and head down to TEL4. Take part in plenty of fun activities, train simulators, game booths and meet-and-greet sessions with the Thoughtful Bunch mascots, and more!

Visit our Facebook page for details  
**Facebook.com/WeKeepYourWorldMoving**



## Own a **KNACKS TOP** collectible!

Shop for unique land transport collectibles at our Marine Parade station pop-up store. Be one of the first to get your hands on our latest merchandise!

## Be a train captain!

Control a virtual train with the TEL Train Simulator at Marine Parade station!

Meet our Friends of Land Transport, a community of transport enthusiasts who are keenly involved in Singapore's land transport matters.



**Passenger service begins on 23 June 2024.**

# EAT

## YOUR WAY

### THROUGH THE EAST

Craving hawker food? Seeking out cosy cafés? Planning a special date night? Check out these East side gems for mouth-watering delights!

#### TE24 KATONG PARK STATION



Photo from [www.umakemehungry.com](http://www.umakemehungry.com)

#### Tanjong Rhu Prawn Noodle

Savour the rich flavours of their signature prawn noodles — tender prawns and QQ noodles in a bowl of aromatic broth.

📍 7 Jln Batu, #01-113, Singapore 431007

🕒 Mon - Tue, Thu - Sat: 7am - 1pm

🚲 4 MINS

#### TE25 TANJONG KATONG STATION



#### My Kitchen – Kerala Restaurant

Tickle your tastebuds with tantalising cuisine from the south western coast of India.

📍 308 Tanjong Katong Rd, Singapore 437091

🕒 Tue - Sun: 11.30am - 3pm, 5.30pm - 10pm

🚲 3 MINS



#### Ponggol Nasi Lemak

Calling all supper friends. There's no need to travel to Ponggol to satisfy your fried chicken and otah cravings with this stall nearby.

📍 238 Tanjong Katong Rd, Singapore 437026

🕒 Fri - Wed: 4.30pm - 11.30pm

🚲 4 MINS



### Seng House

From rich Oxtail Stew to British Fish & Chips and 'Kopi' Butter Banana Treat, this café's menu offers culinary delights beyond your average eatery. What's even better? You can bring along your furry friends to this dog-friendly café!

- 📍 214 Tanjong Katong Rd, Singapore 437007
- 🕒 Daily: 8am - 10.30pm

🕒 4 MINS    🐾 DOG-FRIENDLY

## TE26 MARINE PARADE STATION



### Chin Mee Chin Confectionery

Travel back to the good ol' days with traditional breakfast delights, infused with a unique modern twist.

- 📍 204 East Coast Rd, Singapore 428903
- 🕒 Tue - Sun: 8am - 4pm

🕒 10 MINS



### DID YOU KNOW?

Marine Terrace station spans 440m with six entrances serving many nearby schools and residences! It offers two 24-hour underground links beneath Marine Parade Rd, which ease traffic congestion and provide sheltered connections for pedestrians.

## TE27 MARINE TERRACE STATION

- 📍 MARINE TERRACE MARKET & FOOD CENTRE
- 50A Marine Terrace, Singapore 441050



### Seng Hoe Fish Ball Minced Meat Noodle

Springy noodles, generous toppings of fish balls and pork, and fragrant chilli. It's no wonder this stall is often seen with snaking queues.

- 📍 #01-277
- 🕒 Fri - Wed: 6.30am - 8.30pm

🕒 11 MINS



### Ole Ole Bumbu

Made popular when it was featured on Class 95's Makan Kakis podcast, the nasi lemak and the special lontong with jackfruit will have you saying, "Sedap!"

- 📍 #01-307
- 🕒 Tue - Sun: 6am - 1pm

🕒 11 MINS



## TE28 SIGLAP STATION



### Guilt Free Food

Known for its cinnamon rolls, try these healthy pastries by one of the most popular home bakers in Singapore while saving on delivery — simply order and select pick-up!

📍 21 Jln Sempadan, Singapore 457398

🕒 Tue - Sat: 7am - 12pm

🕒 11 MINS



### Fu Lin Tofu Yuen

This yong tau fu stall has earned a mega fanbase for its freshly-made ingredients and dry noodle bowls with minced meat.

📍 721 East Coast Rd, Singapore 459070

🕒 Daily: 9.30am - 9pm

🕒 7 MINS



### Five Oars Coffee Roasters

Whether you're a casual coffee drinker or a full-fledged aficionado, this is one coffee spot you won't want to miss.

📍 6 Upper East Coast Rd, Singapore 455200

🕒 Daily: 8am - 10pm

🕒 5 MINS



### DID YOU KNOW?

Siglap and Katong Park are the most accessible stations to East Coast Park. You're just a short walk away!

## TE29 BAYSHORE STATION



### Hua Yu Wee Seafood

Indulge in a tantalising seafood experience at this iconic seafood restaurant along the Upper East Coast. Just remember to reserve a table beforehand!

📍 462 Upper East Coast Rd, Singapore 466508

🕒 Daily: 5pm - 11pm

🕒 5 MINS

# EXPLORE THAT ARTSY VIBE


Uncover hidden secrets in Singapore's history as TEL4 brings you closer to historical and cultural gems in the East. Take a gander at these quirky heritage spots for Insta-worthy shots and stunning views.

## TE23 TANJONG RHU STATION

### Tanjong Rhu Lookout Tower

Indulge in breathtaking sunrise and sunset waterfront views from the top of the four-storey high observation deck with loved ones.

- 📍 50 Tanjong Rhu Pl, Singapore 436621
- 🕒 Open 24/7

 2 MINS



### DID YOU KNOW?

Tanjong Rhu was named after the casuarina trees that grew along the coasts of Kallang and Rochor — they are known as *pokok rhu* in Malay!

### Shimano Cycling World

Calling all cycling hobbyists. Interact with some of the eye-opening exhibits at this bike museum that will certainly get your gears turning.

- 📍 6 Stadium Walk, #01-02, Singapore 397698

🕒 Daily: 10am - 8pm

 10 MINS







## TE24 KATONG PARK STATION

### Fort Tanjong Katong

Step back in time with one of the oldest military forts in Singapore. Built in 1879 by the British to fend off potential invaders coming in from the island's Southern Coast, explore one of the most important archaeological finds of 19<sup>th</sup> century Singapore.

📍 59 Fort Rd, Singapore 439105

🕒 Open 24/7

🚶 4 MINS



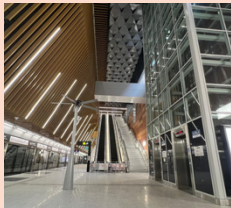
### Rainbow Tree

There's no need to wait for rain to see a rainbow. Catch all the colours on the bark of the Mindanao Gum tree, also known as the Rainbow Eucalyptus tree. Can you spot this heritage tree in Katong Park?

📍 59 Fort Rd, Singapore 439105

🕒 Open 24/7

🚶 4 MINS



### DID YOU KNOW?

At 30m below ground level, Katong Park station is the deepest station of TEL4. That's more than the height of a seven-storey building!

## TE26 MARINE PARADE STATION

### Peranakan Houses

These colourful buildings are not only a hallmark of Peranakan culture, but have also earned their position as one of the most Instagrammable places in Singapore.

📍 287 Joo Chiat Rd, Singapore 427540

🕒 Open 24/7

🚶 4 MINS



# EMBRACE THE GREAT OUTDOORS

Whether you're looking for some therapeutic stretching in the park or adrenaline-pumping action on the water, TEL4 brings you even closer to some great exercise spots.

## TE23 TANJONG RHU STATION



### Singapore Sports Hub

Get your heart pumping with fitness programmes and water sports activities! Whether it's with friends or family, there's something for all experience levels.

- 📍 1 Stadium Drive, Singapore 397629
- 🕒 Daily: 7am - 10pm  
Visit [sportshub.com.sg](http://sportshub.com.sg) for the opening hours of various activities/programmes.

🚲 8 MINS



### Bay South Garden

Bring along your bikes for a scenic ride to Bay South Garden, home to the iconic Supertree Grove, Cloud Forest and Flower Dome attractions.

- 📍 18 Marina Gardens Dr, Singapore 018953
- 🕒 Daily: 5am - 2am

🚲 12 MINS



## TE28 SIGLAP STATION



### Singapore Wake Park

Get your feet wet and adrenaline pumping at Singapore's only cable-ski park built in a lagoon.

- 📍 1206A East Coast Park, Singapore 449891
- 🕒 Daily: 10am - 8pm

🚲 8 MINS



### DID YOU KNOW?

At every Bayshore station entrance are solar panels, ensuring that our ground-level lighting is powered by renewable energy. Tanjong Katong station also features green roofs with solar panels at two exits to boot!

## TE29 BAYSHORE STATION



### Xtreme SkatePark

Join the fun with skater boys and girls here, where you too can cycle and blade while working on some tricks.

- 📍 East Coast Park Service Rd
- 🕒 Mon - Sat: 7.30am - 10pm  
Sun: All day

🚲 13 MINS



### DID YOU KNOW?

Marine Parade station will feature a first-of-its-kind underground space for parking up to 360 bicycles! Marine Terrace and Bayshore stations will also have these underground spaces with around 200 bicycle lots each.

VIBE WITH

# THE WHOLE FAMILY

With TEL4, it's a breeze to reach places you can enjoy with the family in tow.

## TE24 KATONG PARK STATION

### Goodman Arts Centre

Keep the kids busy with special holiday camps held at this seven-acre arts hive. Meanwhile, adults can chill and enjoy brunch at Café Melba.

- 📍 90 Goodman Rd, Singapore 439053
- 🕒 Daily: 10am - 10pm

🚲 4 MINS

★ KID-FRIENDLY



Photo from Arts House Limited.

## TE25 TANJONG KATONG STATION

### Coastal Playgrove

Get ready for some family-friendly fun at the tallest outdoor play area and tallest outdoor slide in Singapore.

- 📍 902 East Coast Park Service Rd, Singapore 449874
- 🕒 Tue - Sun: 8am - 8pm

🚲 7 MINS

★ KID-FRIENDLY





## TE26 MARINE PARADE STATION

### Parkway Parade

Unwind with family amidst the diverse range of food and entertainment options available at this iconic neighbourhood mall.

- 📍 80 Marine Parade Rd, Singapore 449269
- 🕒 Daily: 10am - 10pm

🚶 4 MINS



### Cubewerkz Puzzle Store

Give your brain a good workout at this shop that's filled with puzzles for all ages!

- 📍 1 Brooke Rd, #02-32, Katong Plaza, Singapore 429979
- 🕒 Sun - Fri: 12pm - 6pm  
Sat: 11am - 6pm

🚶 5 MINS



### Marine Cove

Choose from a selection of delectable eateries here, and a 3,500m<sup>2</sup> playground for kids of all ages too. With plenty of bike rentals for the whole family, you can explore even more of East Coast Park while getting some exercise in.

- 📍 1000 East Coast Park, Singapore 449876
- 🕒 Open 24/7

🚶 6 MINS ★ KID-FRIENDLY



## TE28 SIGLAP STATION

### KPMG Wellness Garden

Surround yourself in the tranquility of nature in this first-of-its-kind, multi-generational wellness garden. Enjoy four key zones with the whole family.

- 📍 Area D, East Coast Park, Singapore 455929
- 🕒 Open 24/7

🚶 11 MINS



Photo from [www.nparks.gov.sg](http://www.nparks.gov.sg)



# Move Lite

Did you know a 10km car ride generates enough carbon to cause 20kg of glacial ice to melt? Leave your car at home and Move Lite – it’s the cooler thing to do. A simple decision like switching to walking, cycling or taking public transport can help transform our city.

With a smaller carbon footprint and less worries, you can now live your days feeling lite on smoother, greener journeys!



## Need a reason to Move Lite?



### Lite on the planet

Public transport is the greener way to go. It reduces your carbon footprint by 90%, as compared to driving.



### Lite on your waistline

Fit in some quick exercise when you walk or cycle to your nearest station.



### Lite on your schedule

Fancy a quick snooze or some light reading? You can do all these and more on public transport!



### Lite on your wallet

Stretch your dollar by riding public transport and save on fuel or parking charges! Just tap and go with your debit/credit card – it’s hassle-free!

Looking to plan a day tour around the TEL4 stations with your friends or family?

Explore the vibes of the East while moving lite with our recommended itineraries in the next few pages.



# A perfect DATE NIGHT along the East Coast

Ready to make a lasting impression on your date? Try this itinerary for an unforgettable date night as you Move Lite around the TEL stations!

Start

1

## TE25 TANJONG KATONG



Kick off your date with a nostalgic journey of Tanjong Katong's history depicted on this wall mural by Sim Chiyin.

*\*This artwork is commissioned by the Art in Transit programme.*

2

## Bruno's



Just an 8-min walk away, Bruno's is the perfect dinner spot. They're best known for their authentic Italian pizza and pasta!

3

## Juz Scooop



Continue down the street for 5 mins and drop by Juz Scooop for a sweet, post-dinner ice cream treat!

6

## Presotea



End the night with bubble tea from Presotea at Kallang Leisure Park, a short 10-min walk away.

5

## Lookout Tower



Maybe even hard-launch your date with a couple selfie at Tanjong Rhu Lookout Tower?

4

## TE23 TANJONG RHU



Catch the sunset as you enjoy a romantic stroll along Tanjong Rhu Promenade Park Connector.

# PHOTO TOURS for the 'gram

Move Lite and discover some of the East side's richest stories and most Instagrammable photo-worthy spots. Get your cameras ready!

Start

1

**TE27 MARINE TERRACE**



Make a first stop within the station by viewing a thought-provoking mural titled 'A seat at the end of the long long table' by Moses Tan.

*\*This artwork is commissioned by the Art in Transit programme.*

2

**The Intan**



Take bus 55 from Block 57 and alight 4 stops later at Aft Joo Chiat Place. Walk to The Intan for an immersive experience with Peranakan culture and antiques.

Book your tours beforehand: [the-intan.com](http://the-intan.com)

3

**Eurasian Heritage**



Walk to Eurasian Heritage Gallery to discover the heritage and traditions of this small and vibrant community.

6

**TE26 MARINE PARADE**



Meet the sculpture 'WALK' by artist Ang Sookoon located at Exit 3, before ending your day via public transport.

*\*This artwork is commissioned by the Art in Transit programme.*

5

**Conserved Terrace Houses**



Walk to the Conserved Terrace Houses along East Coast Road, and appreciate the unique architecture and colours that were once a common sight in Singapore's history.

4

**Peranakan Houses**



Head over to the iconic restored Peranakan Houses and snap some pictures with their colourful exteriors.





# Besties' DAY OUT

Need ideas for a fun day out with friends? Move Lite with your besties and breeze from one adventure to the next.

Start

1

**TE27 MARINE TERRACE**



Take an 8-min walk to Breakfast Grill and catch up over a delightful brunch of artisanal sandwiches.

2

**Creamier**



Walk 7 mins to Creamier Handcrafted Ice Cream and Coffee for a refreshing scoop (or two!) of ice cream on waffles.

3

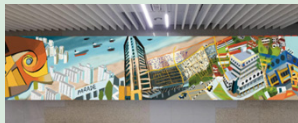
**Climb Central**



Continue for 5 mins to i!2 Katong, where you can challenge your buddies to rock-climbing at Climb Central.

6

**TE26 MARINE PARADE**



Snap a final selfie with your bestie within this station before heading home!

5

**Choice Cuts Pizza and Records**



End off your outing with New York-style pizza at Choice Cuts Pizza and Records next door, while browsing their extensive collection of vinyl records.

4

**Cat Socrates**



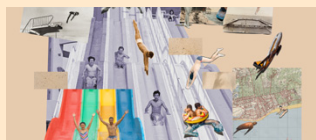
Turn the corner to Cat Socrates, a gift shop for all things kitsch and novel. Be sure to say hi to the resident cat roaming the store!

# IMMERSE IN ART

Celebrate the rich artistic and cultural tapestry of the East through a series of artworks commissioned under LTA's Art in Transit (AIT) programme, and other collaborative art designs around the TEL4 stations.

## TE25 TANJONG KATONG STATION



*'The waters are blue  
Yet I pine for you' — Sim Chiyin*

Marvel at this life-sized mural bearing a captivating collage of old and new pictures. Take a walk down memory lane and reflect on this rich tapestry of Tanjong Katong memories.

\*Commissioned under the AIT Programme.

## TE26 MARINE PARADE STATION



*'WALK' — Ang Sookoon*  
A tribute to all who have walked through life in Marine Parade and played a part in its rich history. Can you guess what the sculpture is made to look like? It's inspired by plasticine, used for children's play!

\*Commissioned under the AIT Programme.



\*Developed by designer Kevin Lee.

Delve into the collective memory of Singapore's journey through this feature wall and witness first-hand the transformation of reclaimed land into the vibrant cityscape we know today.

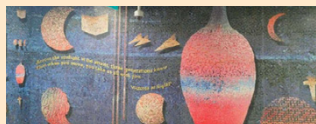
## TE28 SIGLAP STATION



\*Commissioned under the AIT programme.

*'The Darkness which Reveals' — Melissa Tan*

Made with layers of steel against a backdrop of blue terracotta wall, this artwork explores how shadows are cast on the moon's surface, revealing information on its depth from the uneven terrain.



\*Donated under the GoA programme.

*'Journey Across Sunlight: A Siglap Mosaic' — Brian Gothong Tan*

Commissioned by Lim Eng Chong, this Gift of Art (GoA) mosaic artwork designed by Brian Gothong Tan was inspired by the works of old Victorian luminaries: Dr Iskandar Jalil's ceramics, and Professor Edwin Thumboo's poetry.

P.S. DON'T FORGET TO CHECK OUT

# KNACKSTOP

The Knackstop collection features a range of stylish merchandise inspired by Singapore's iconic land transport system. Check out everything from sleek apparel to quirky accessories! Get your hands on these merchandise via our e-stores (Lazada and Shopee).



Land Transport Authority

We Keep Your World *Moving*



[www.lta.gov.sg](http://www.lta.gov.sg)



[@WeKeepYourWorldMoving](https://www.facebook.com/WeKeepYourWorldMoving)



[LTA Singapore](https://www.youtube.com/LTA_Singapore)



[@ltagsg](https://www.instagram.com/ltagsg)



[@ltagsg](https://twitter.com/ltagsg)



[@LTASingapore](https://www.linkedin.com/company/LTASingapore)



[@ltagsg](https://www.tiktok.com/@ltagsg)